

**KIDS  
GUIDE  
EN**

Wulles presents

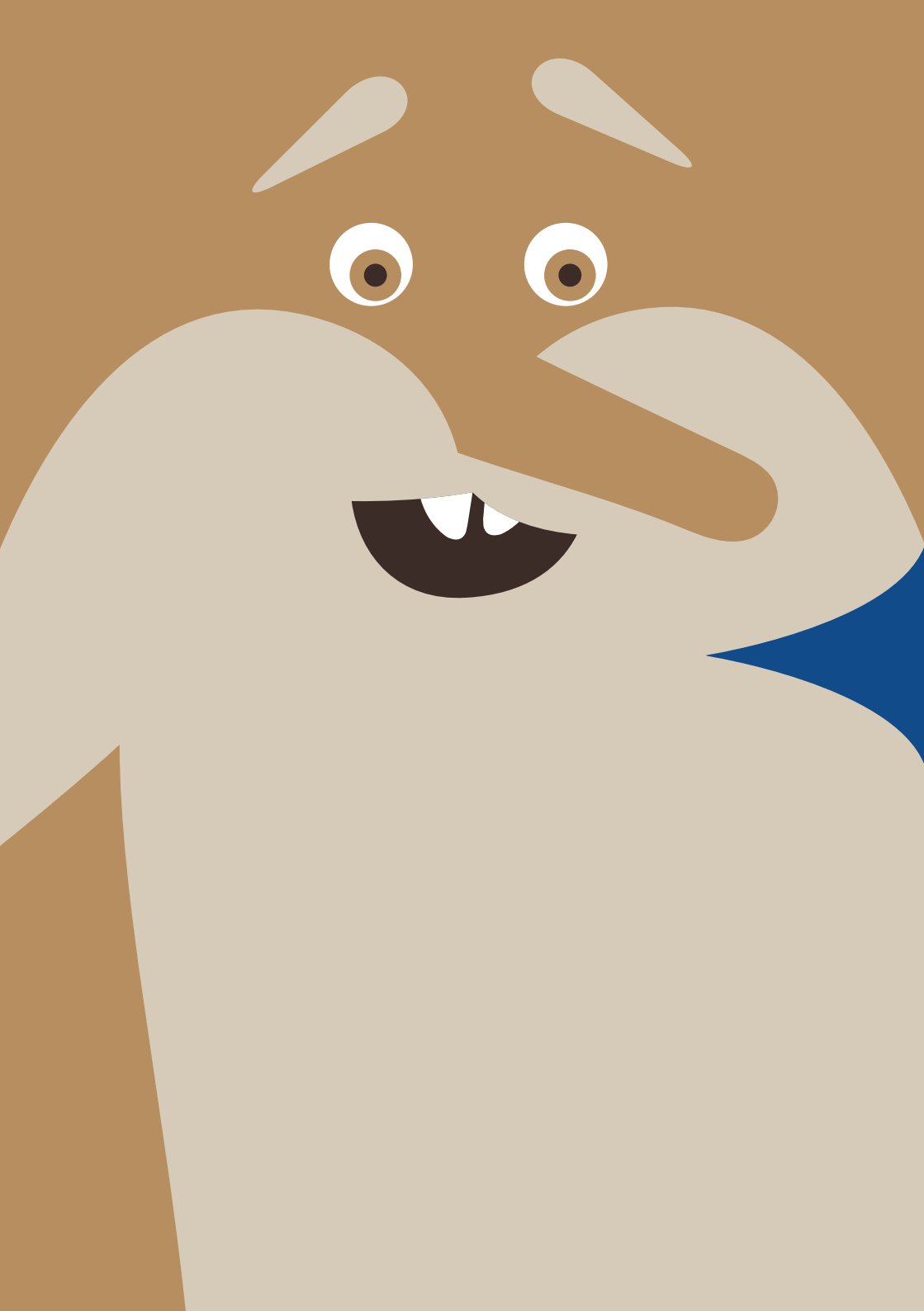
# Supports / Surfaces

Notre collection  
à l'affiche

Archaeology History Art

**National  
musée**

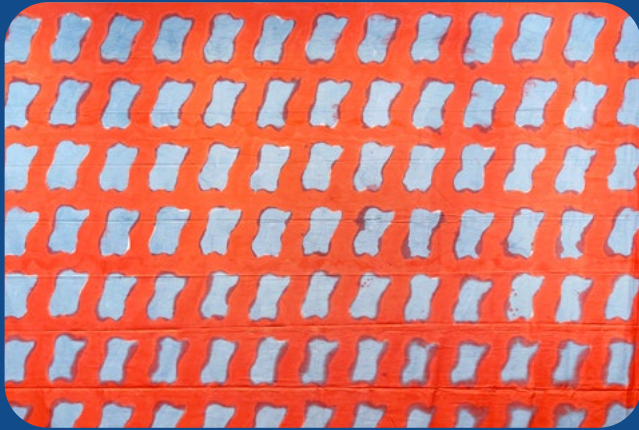
um Fäschmaart



**Have you ever noticed that an artwork is made up of different parts (canvas, frame, paint...)? The artists you will meet here explore these materials in new ways. Now it's your turn to let your imagination run wild!**

Get creative with

# Claude Viallat



## Draw shapes with a stencil

1. Tear out the stencil from the cardboard page at the centre of the booklet.
2. Use the stencil to draw shapes.
3. The page has two sections, so you can draw two different pictures.
4. Colour in the shapes and the background.



*You can also colour in the shape without tracing the outline.*






Get creative with

# André-Pierre Arnal



## Create geometric forms

1. Tear out the shapes from the cardboard page at the centre of the booklet. 
2. Use the different shapes to create new geometric forms.
3. Looking for inspiration?  
Check out the ideas below!





Get creative with

# André-Pierre Arnal

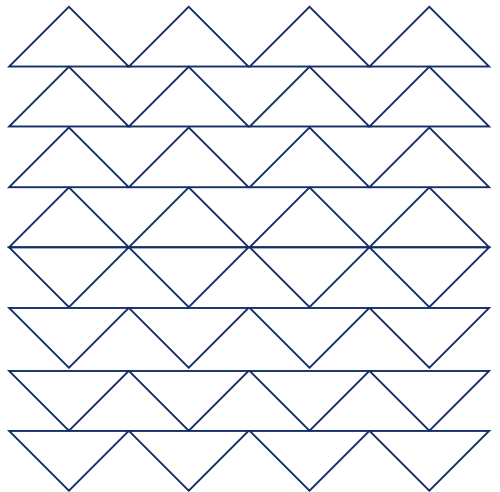
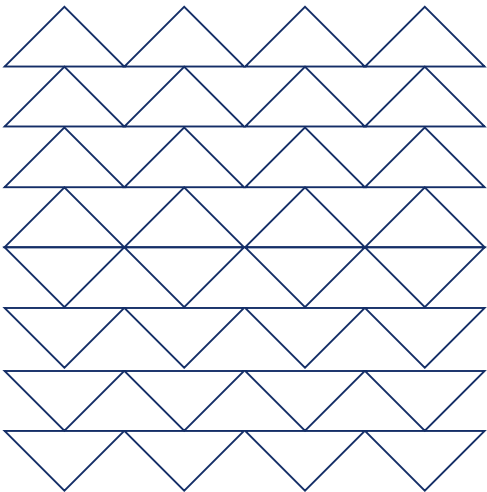
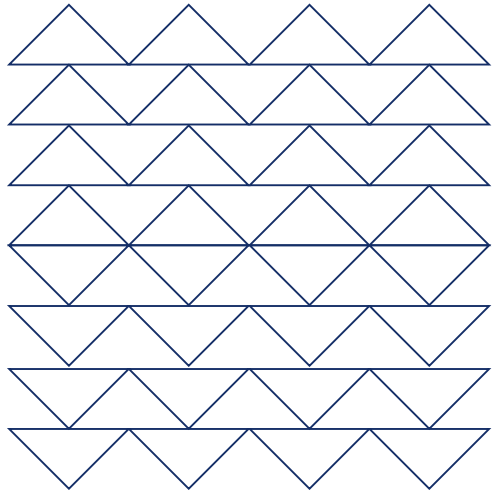
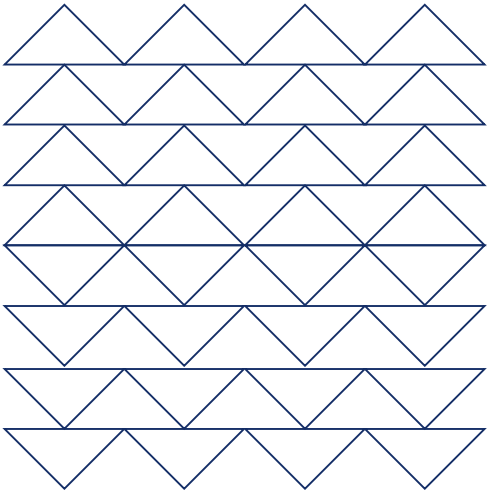


## Create a pattern

1. Colour in the shapes with different colours.
2. Make sure the colours don't overlap.

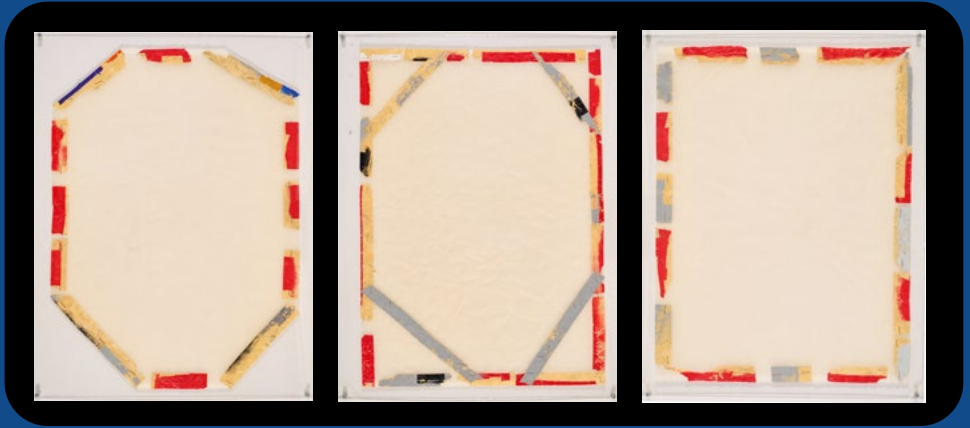






Get creative with

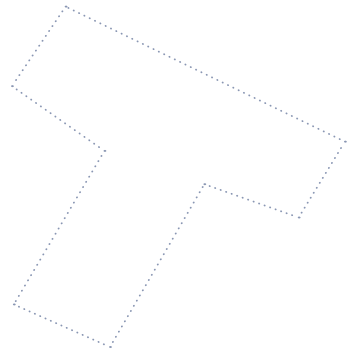
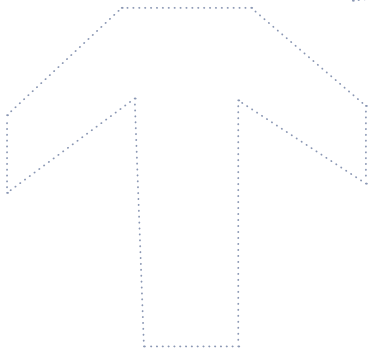
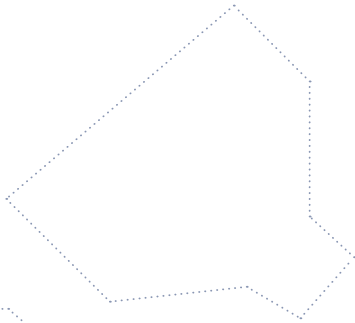
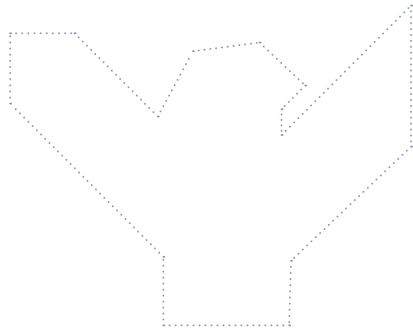
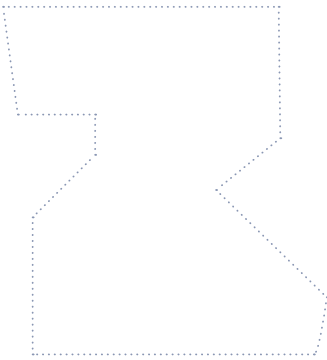
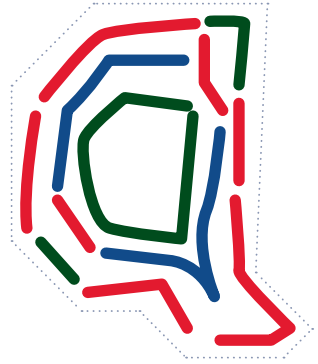
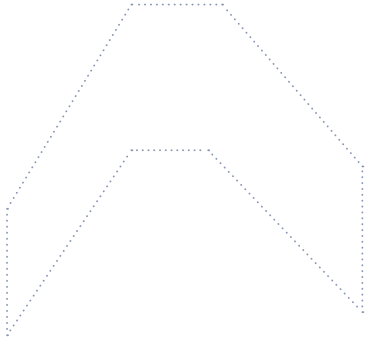
# Pierre Buraglio



## Play with colours

1. Draw lines with different colours in the shapes.
2. Change colour between the different lines you draw.
3. Make sure the lines of the same colour don't touch.

(example)



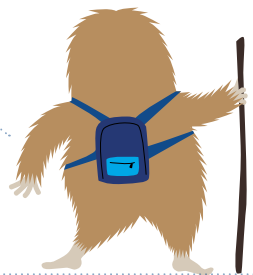
Get creative with

# Marc Devade



## Create your own path

1. Draw your path above and below the picture.
2. Draw the landscape around your path.
3. Imagine where your path could lead to and draw it.







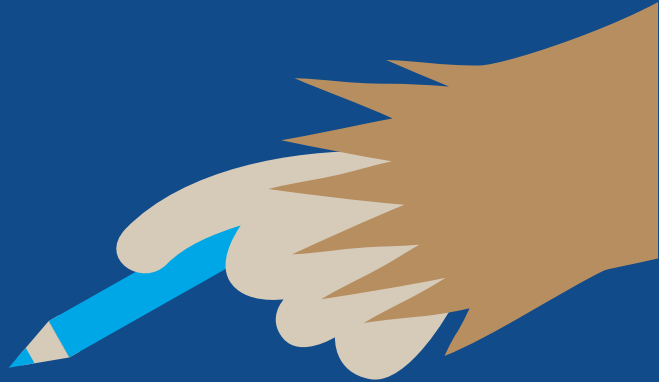
Get creative with

# Patrick Saytour

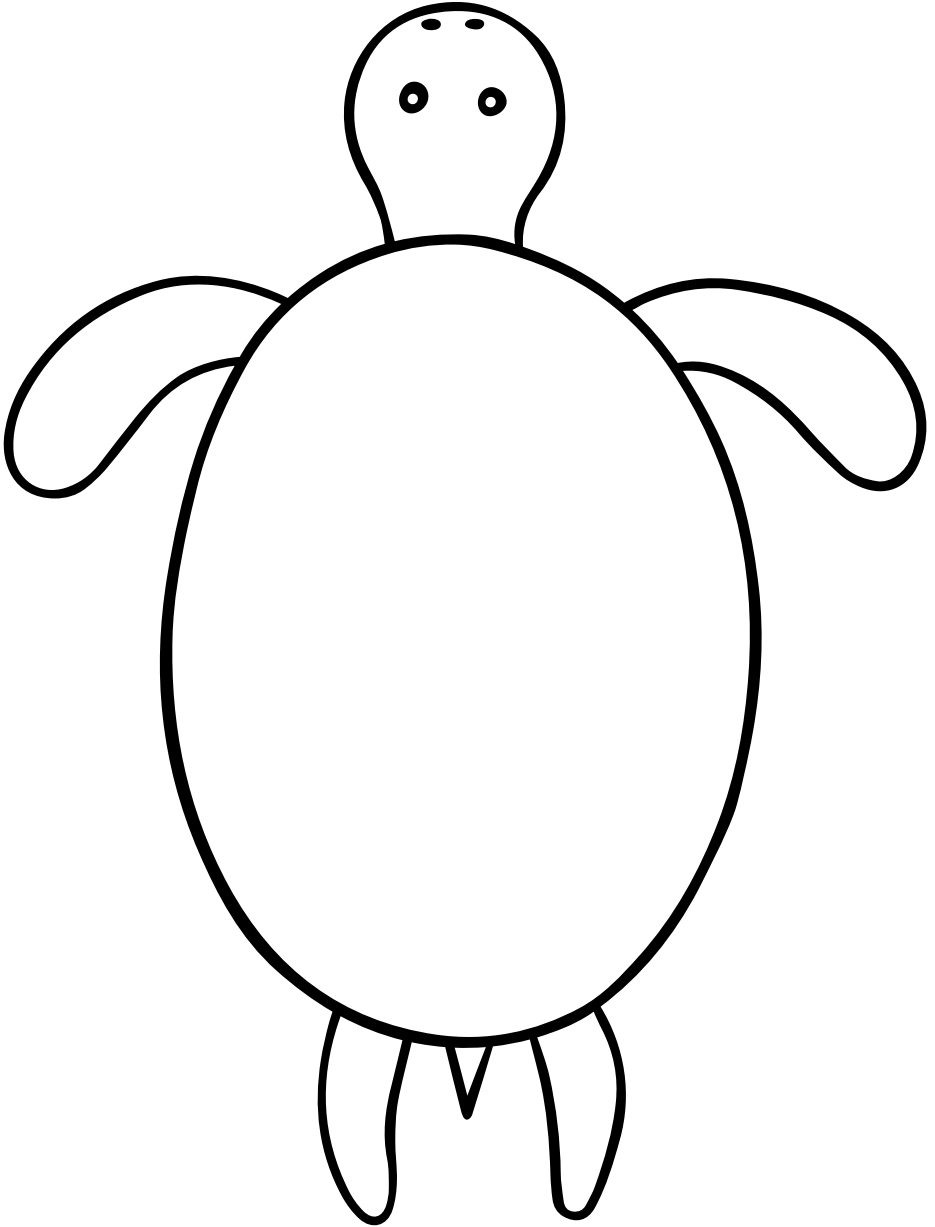


## Draw patterns

1. Spot the diamond-shaped pattern in the artist's work.
2. Draw this pattern on the back of the turtle with a coloured pencil.
3. Decorate each diamond with a dot like in the artist's work.

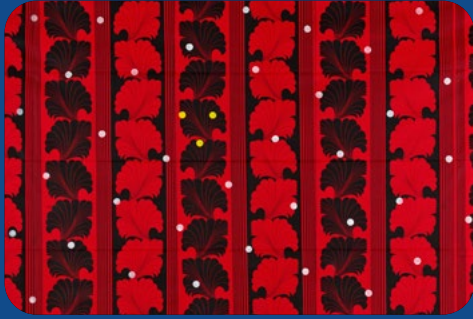






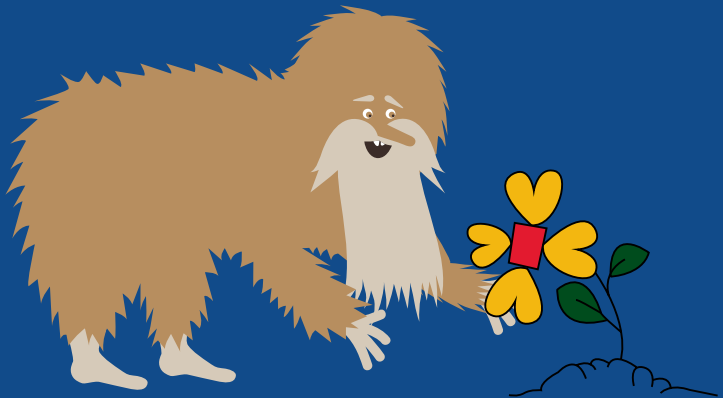
Get creative with

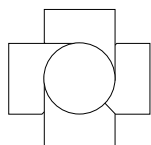
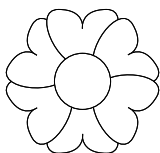
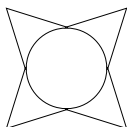
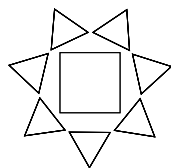
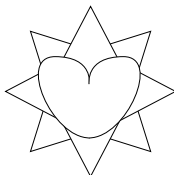
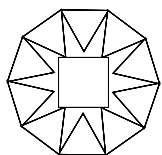
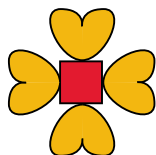
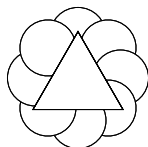
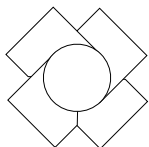
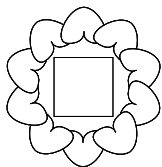
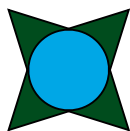
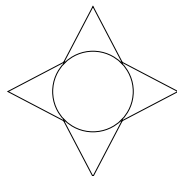
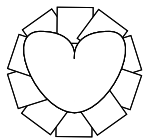
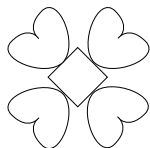
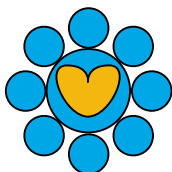
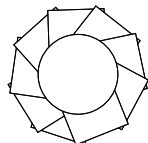
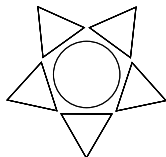
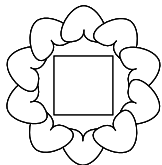
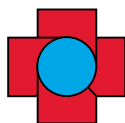
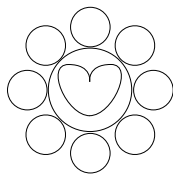
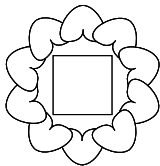
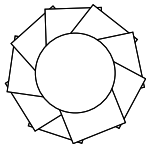
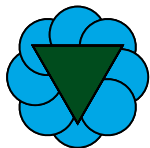
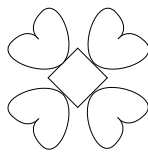
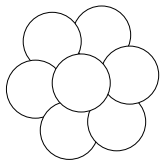
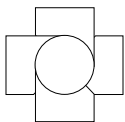
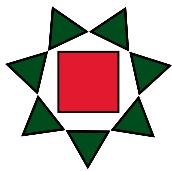
# Noël Dolla



## Colour in patterns

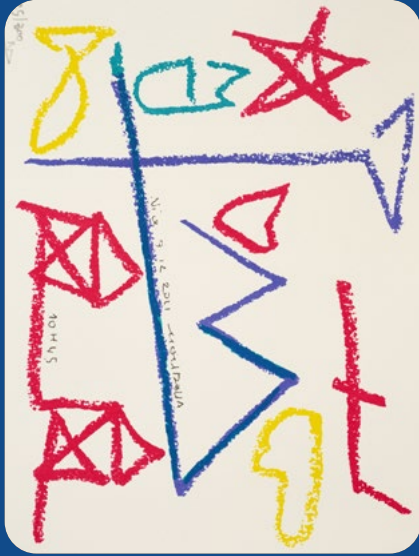
1. Each flower is made up of different shapes.
2. Each shape has its own colour.
3. Colour in the flowers – be sure to use the right colour for each shape.





Get creative with

# Noël Dolla

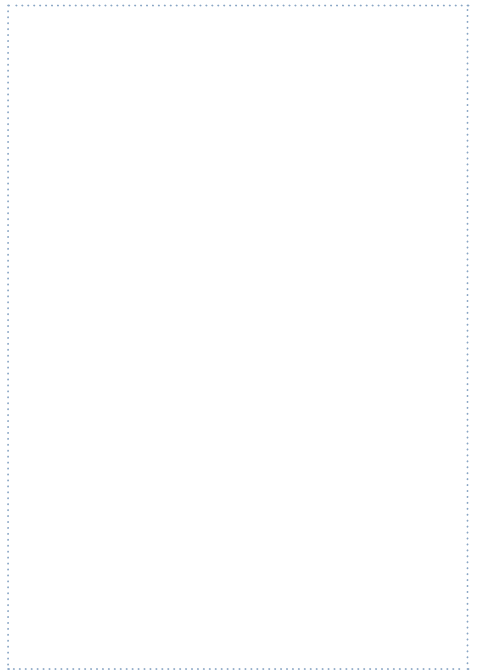
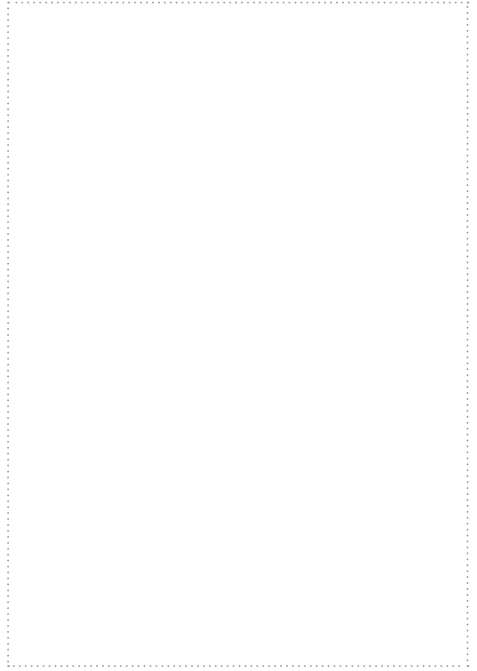
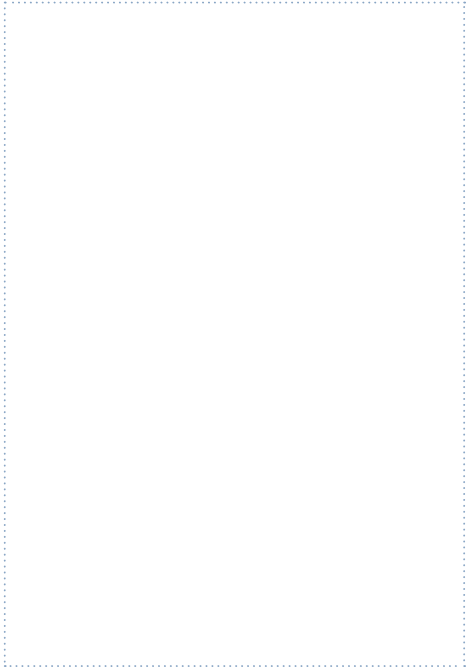


## Copy the symbols

1. Draw the symbols several times to create a new artwork.
2. Change colour between the different shapes.
3. When you draw the symbols over and over again, they'll look slightly different each time and add variety to your artwork.

*The original work is in our collection, but not on display here.*






Get creative with

# Pierre Buraglio



## Find the letters

1. Guess which letters are hidden in the squares and connect them with the right answer.
2. Write your name at the bottom of the page, hiding a part of each letter.



*The original work is in our collection, but not on display here.*



Get creative with

# Jean-Pierre Pincemin



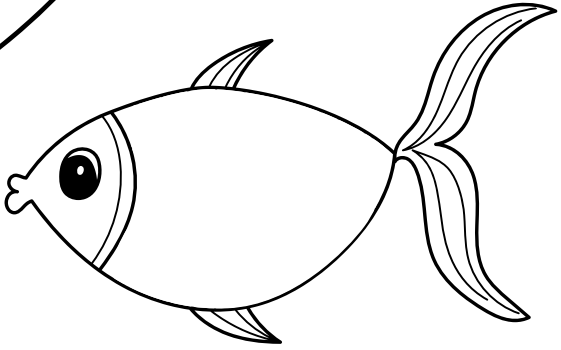
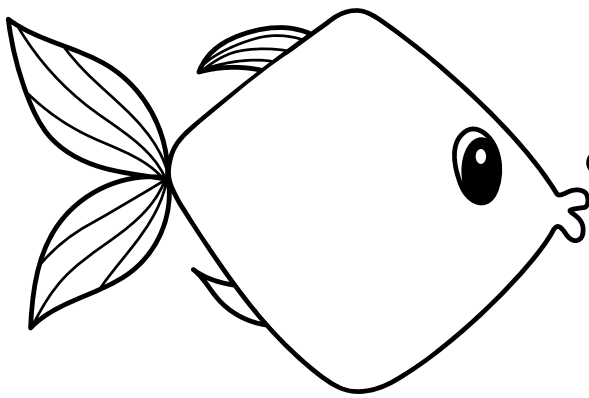
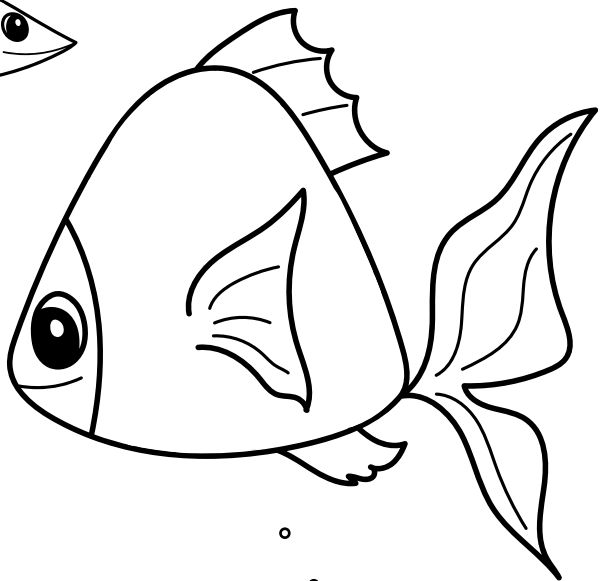
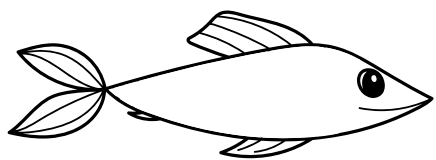
## Draw patterns

1. Draw scales onto the fish.
2. Colour in the scales.

*The original work is  
in our collection,  
but not on display here.*











**Nationalmusée  
um Fëschmaart**

Marché-aux-Poissons  
L-2345 Luxembourg  
T. +352 47 93 30 - 214/414  
[servicedespublics@mnaha.etat.lu](mailto:servicedespublics@mnaha.etat.lu)

**Opening hours**

Mon: closed  
Tue - Sun: 10:00 - 18:00  
Thu: 10:00 - 20:00

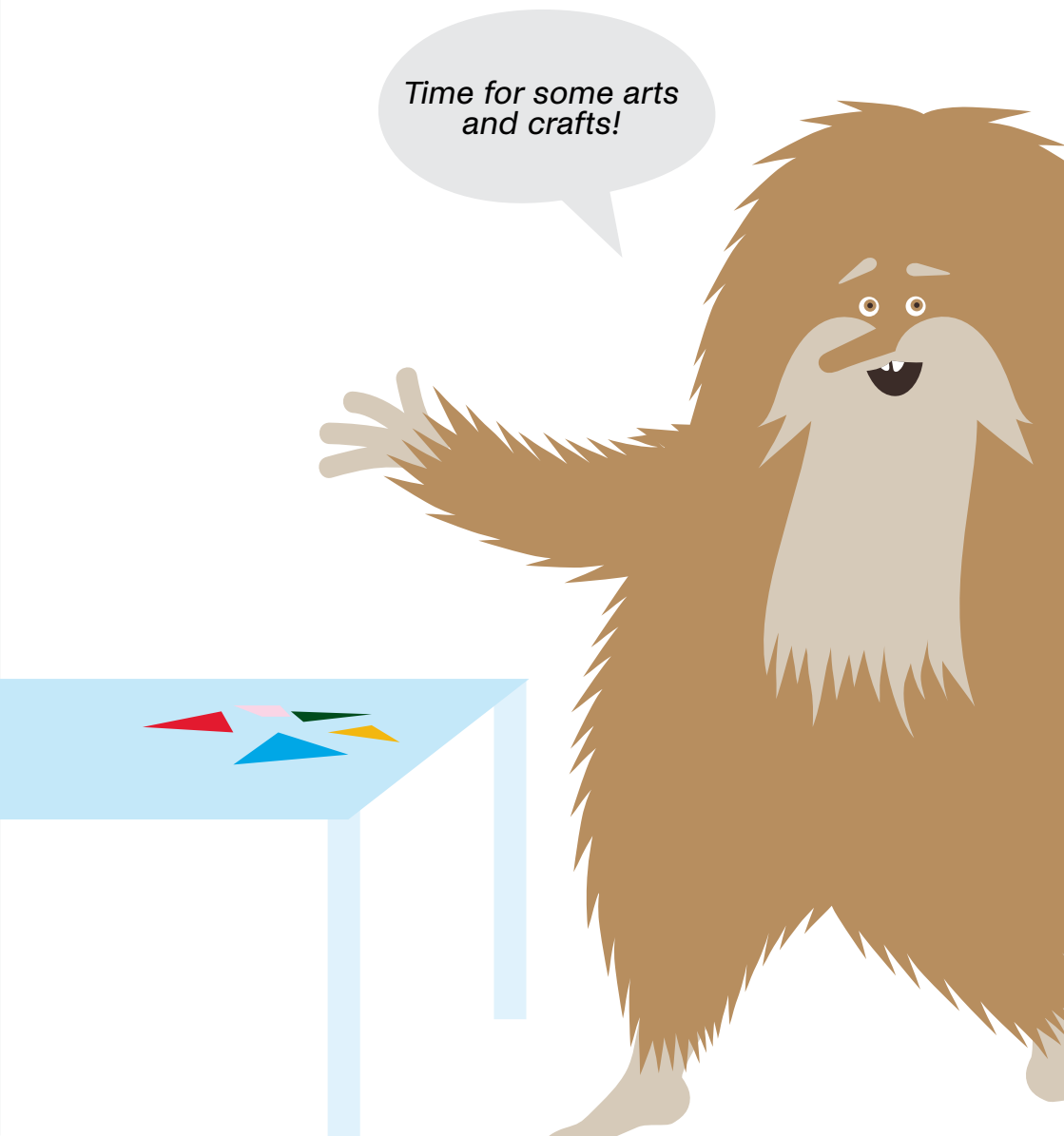
**Browse our  
programme online**  
[www.nationalmusee.lu](http://www.nationalmusee.lu)



Stencil and shapes

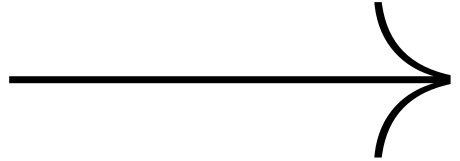
# Sections to tear out

*Time for some arts  
and crafts!*



Get creative with

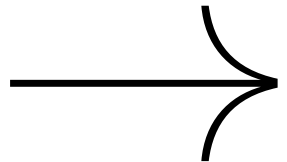
**Claude Viallat**



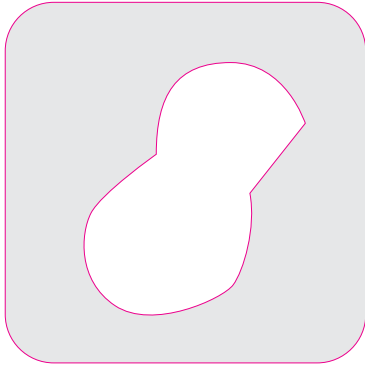
---

Get creative with

**André-Pierre Arnal**



Tear out



Tear out

